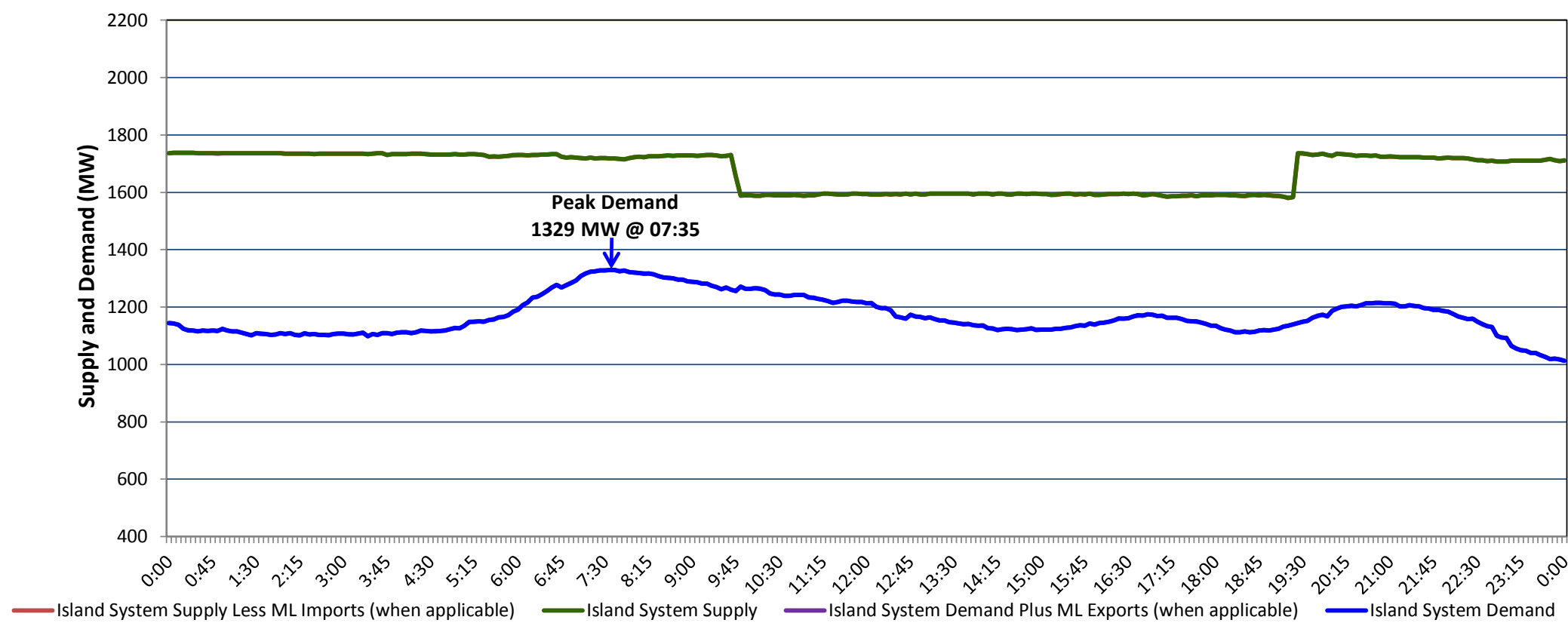


**Newfoundland Labrador Hydro (NLH)
Supply and Demand Status Report Filed Wednesday, April 11, 2018**

**Section 1
Island Interconnected System Supply, Demand & Exports
Actual 24 Hour System Performance For Tuesday, April 10, 2018**



Supply Notes For April 10, 2018

- 1,2
- A As of 2115 hours, January 04, 2018, Stephenville Gas Turbine available at 25 MW (50 MW).
 - B As of 0325 hours, March 27, 2018, Holyrood Unit 1 available at 137 MW (170 MW).
 - C As of 0801 hours, April 02, 2018, Holyrood Unit 3 unavailable due to planned outage 110 MW (150 MW).
 - D As of 1300 hours, April 05, 2018, Hawkes Bay Diesel Plant unavailable (5 MW).
 - E As of 1754 hours, April 05, 2018, Holyrood Unit 2 available at 80 MW (170 MW).
 - F At 0941 hours, April 10, 2018, Bay d'Espoir Unit 6 unavailable due to planned outage (76.5 MW).
 - G At 0947 hours, April 10, 2018, Bay d'Espoir Unit 5 unavailable due to planned outage (76.5 MW).
 - H At 1923 hours, April 10, 2018, Bay d'Espoir Unit 5 available (76.5 MW).
 - I At 1923 hours, April 10, 2018, Bay d'Espoir Unit 6 available (76.5 MW).

**Section 2
Island Interconnected Supply and Demand**

Wed, Apr 11, 2018	Island System Outlook ³	Seven-Day Forecast	Temperature (°C)		Island System Daily Peak Demand (MW)	
			Morning	Evening	Forecast	Adjusted ⁷
Available Island System Supply: ⁵	1,695 MW	Wednesday, April 11, 2018	-2	-2	1,345	1,265
NLH Generation: ⁴	1,390 MW	Thursday, April 12, 2018	-2	-3	1,320	1,240
NLH Power Purchases: ⁶	100 MW	Friday, April 13, 2018	-4	0	1,300	1,220
Maritime Link Imports:	- MW	Saturday, April 14, 2018	3	-2	1,315	1,235
Other Island Generation:	205 MW	Sunday, April 15, 2018	-1	0	1,280	1,200
Current St. John's Temperature & Windchill:	-3 °C	Monday, April 16, 2018	0	-1	1,235	1,155
7-Day Island Peak Demand Forecast:	1,345 MW	Tuesday, April 17, 2018	-2	-1	1,295	1,215

Supply Notes For April 11, 2018

- Notes:
1. Generation outages for running and corrective maintenance are included. These are not unusual for power system operations. They generally do not impact customer supply. The power system operators schedule outages to system equipment whenever possible to coincide with periods when customer demands are low and sufficient supply reserves are available. However, from time to time equipment outages are necessary and reserves may be impacted.
 2. Due to the Island System having no synchronous connections to the larger North American grid, when there is a sudden loss of large generating units some customer's load must be interrupted for short periods to bring generation output equal to customer demand. This automatic action of power system protection, referred to as under frequency load shedding, is necessary to ensure the integrity and reliability of system equipment. Under frequency events typically occur 5 to 8 times per year on the Island Interconnected System and the resultant customer load interruptions are generally less than 30 minutes.
 3. As of 0800 Hours.
 4. Gross output including station service at Holyrood (24.5 MW) and improved NLH hydraulic output due to water levels (35 MW).
 5. Gross output from all Island sources (including Note 4).
 6. NLH Power Purchases include: CBPP Co-Gen, Nalcor Exploits, Rattle Brook, Star Lake, Wind Generation, Vale capacity assistance (when applicable).
 7. Adjusted for CBP&P and Maritime Link Exports.

**Section 3
Island Peak Demand Information
Previous Day Actual Peak and Current Day Forecast Peak**

Tue, Apr 10, 2018	Actual Island Peak Demand ⁸	07:35	1,329 MW
Wed, Apr 11, 2018	Forecast Island Peak Demand		1,345 MW

- Notes: 8. Island Demand / ML Exports (where applicable) is supplied by NLH generation and purchases, plus generation owned and operated by Newfoundland Power and Corner Brook Pulp & Paper (Deer Lake Power, DLP).